



## Flow meter for gaseous media

**vent-captor 3205.30/XX** for compressed air up to 10 bar



The **vent-captor 3205.30** is an air flow meter for industrial applications. The vent-captor can be integrated into measurement and control systems without additional components. Its function base upon the calorimetric principle and provides a wide measuring range. This vent-captor in a stainless steel housing is particularly suited for use under pressure conditions up to 10 bar.

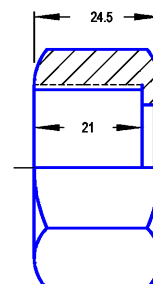
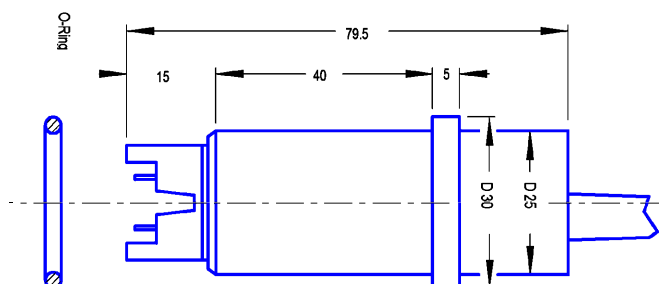
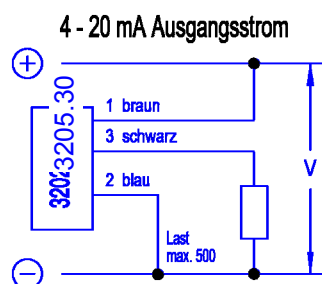
- precise flow meter for gaseous media up to 10 bar
- in robust stainless steel version
- for compressed air up to 10 bar
- adjustable measuring range
- without any moving parts
- linear current output 4-20 mA
- **ISO 9001 : 2008**
- Types/Measuring range:  
/5 : 0-5 m/s, /10 : 0-10 m/s, /20 : 0-20 m/s  
/30 : 0-30 m/s, /40 : 0-40 m/s<sup>\*2</sup>, /50 : 0-50 m/s<sup>\*2</sup>



### Technical Data

|                            |  |
|----------------------------|--|
| Typ                        | 3205.30/xx   |
| Medium                     | gaseous (aggressive media on request)  |
| <b>Sensor Data *1</b>      |  |
| Measuring range            | 0-5 m/s, - 10 m/s, - 20 m/s, - 30 m/s, - 40 m/s <sup>*2</sup> , - 50 m/s <sup>*2</sup> |
| Adjustable                 | continuously from 20 - 100% by means potentiometer for zero point and range            |
| Adjustment characteristics | logarithmic to flow speed  |
| Linearity deviation        | < 5% best fitting slope  |
| Repeatability tolerance    | < 3%   |
| Medium temperature         | -20 °C bis +70 °C  |
| Ambient temperature        | -20 °C bis +70 °C  |
| Pressure                   | max 10 bar   |
| Temperature drift          | < 0,3 % / K  |
| <b>Mechanical data</b>     |  |
| Protection class           | IP 64  |
| Material sensor probe      | ceramic with overglaze   |
| Material housing           | stainless steel WN 1.4305 / AISI 303   |
| Electrical connection      | 2 m oilflex cable / 3 x 0,5 mm <sup>2</sup>  |
| Body dimensions            | D 20/25x L 79,5 mm   |
| <b>Electrical data</b>     |  |
| Operating voltage          | 24 V DC +/- 30 %   |
| Current output             | 4 - 20 mA  |
| Load                       | max. 500Ω  |

\*1 all data relate to medium air      \*2 only with increased linearity deviation



since 1976



LASER  
MEASURING SYSTEMS

FAE S.R.L. • Via Tertulliano, 41 • 20137 Milano  
Tel. +39 02 55187133 • Fax +39 02 55187399

www.fae.it  
e-mail: fae@fae.it

Technical data subject to alteration! · Rev. AD / 02.06.16